

☒ Question numbers ☐ Show answers
☒ Directions ☒ Changing questions hides answers
☒ Lines Zoom:

[More like these](#)

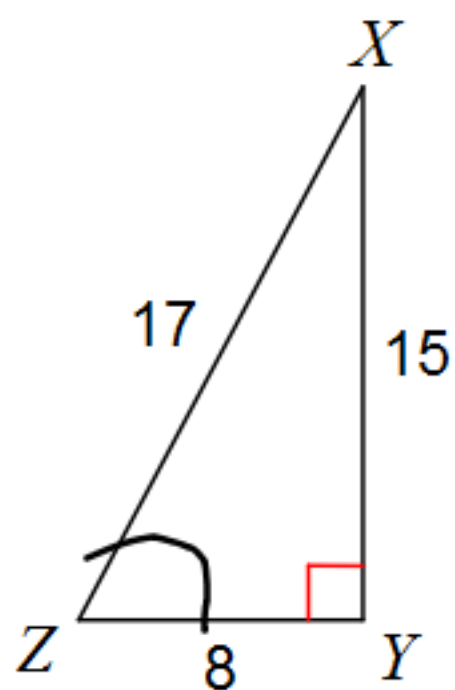
Jump



1-up

Find the value of each trigonometric ratio to the nearest ten-thousandth. Show several steps.

11) $\tan Z$



$$\begin{aligned}\tan Z &= \frac{0}{15} \\ \tan Z &= \frac{15}{8} \\ \tan Z &= 1.875\end{aligned}$$

☒ Question numbers ☐ Show answers
☒ Directions ☒ Changing questions hides answers
☒ Lines Zoom:

[More like these](#)

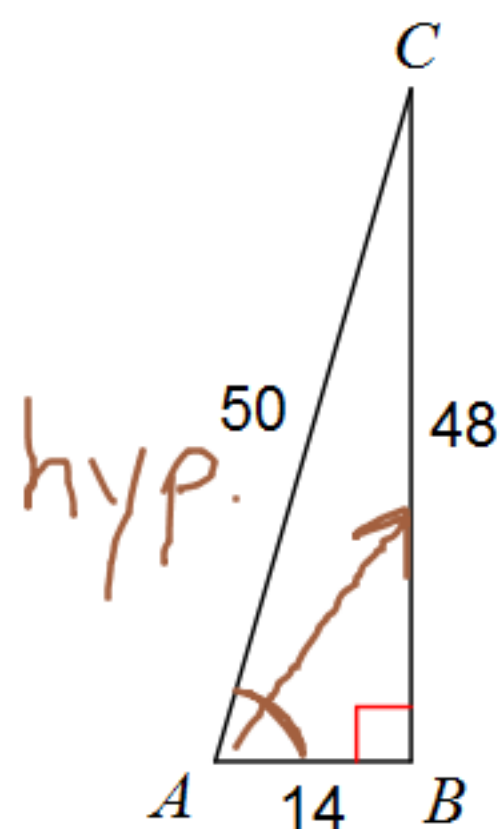
Jump



1-up

Find the value of each trigonometric ratio to the nearest ten-thousandth. Show several steps.

12) $\tan A$



$$\tan A = \frac{\text{opposite}}{\text{adjacent}}$$

$$\tan A = \frac{48}{14}$$

$$\tan A = 3.42857$$
$$= 3.4286$$

☒ Question numbers ☐ Show answers
☒ Directions ☒ Changing questions hides answers
☒ Lines Zoom:

[More like these](#)

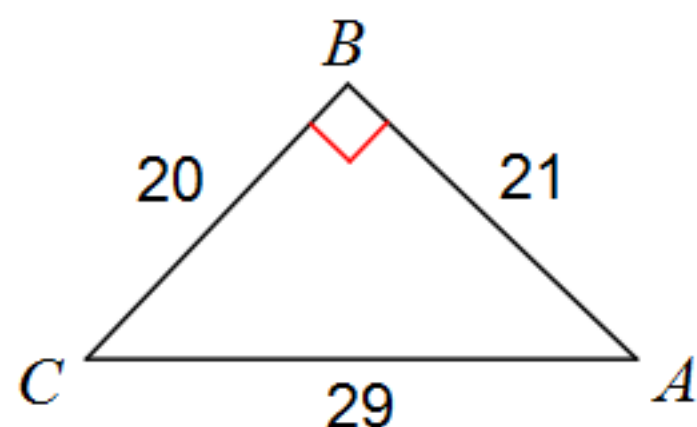
Jump



1-up

Find the value of each trigonometric ratio to the nearest ten-thousandth.

33) $\cos C$



A) 1.0500

B) 0.7241

C) 0.9524

D) 0.6897

$$\cos C = \frac{A}{H}$$

$$\cos C = \frac{29}{20}$$

$$\cos C = 1.4500$$