

Filter Index Order

- Absolute value
- Equations, graphing
- Equations, solving
- Inequalities
- Combining like terms
- Completing the square
- By finding the constant
- Solving equations by
- Discriminant
- Distance Formula
- Distributive property
- Dividing
- Polynomials
- Radical expressions
- Rational expressions
- Rational numbers
- Scientific notation
- Equations
- Absolute Value
- Multi-step
- One-step
- Proportions
- Quadratic, solving by completing the square
- Quadratic, solving by factoring
- Quadratic, solving by taking square roots

1.96 pages
30 questions

Current question sets (2):

- 10 × Finding Trig. Ratios of Angles
- 20 × Using Trig to Find Angles in Triangles

Math 10P

SOH CAH TOA

Name _____

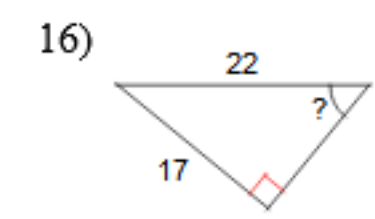
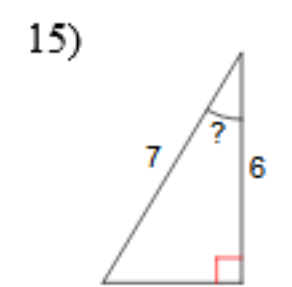
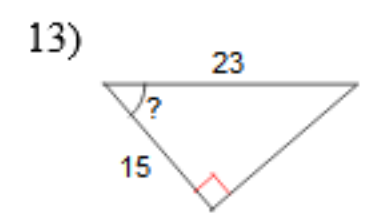
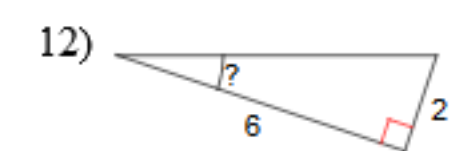
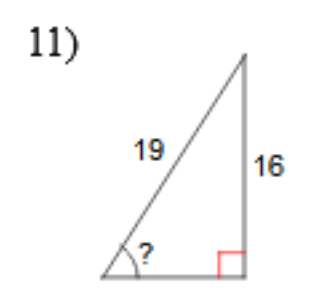
Trigonometry Assignment # 2

Date _____

Find the value of each trigonometric ratio to the nearest ten-thousandth.

- $\sin 31^\circ = 0.5150$
- $\tan 33^\circ = 0.6494$
- $\tan 85^\circ = 11.4301$
- $\cos 65^\circ = 0.4226$
- $\cos 88^\circ = 0.3489$
- $\cos 75^\circ = 0.2588$
- $\sin 33^\circ = 0.5446$
- $\tan 54^\circ = 1.3764$
- $\sin 54^\circ = 0.8090$
- $\cos 78^\circ = 0.2079$

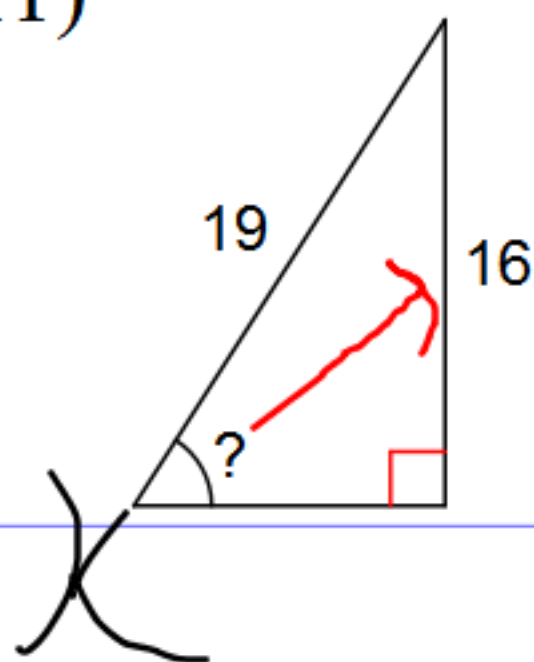
Find the measure of the indicated angle to the nearest degree.



Find the measure of the indicated angle to the nearest degree.

SOUTHCAHTOA

11)



$$\sin X = \frac{O}{H}$$

$$\sin X = \frac{16}{19}$$

$$\sin X = 0.8421$$

$$X = 57^\circ$$

and \sin

\sin^{-1}

☒ Question numbers ☐ Show answers
☒ Directions ☒ Changing questions hides answers
☒ Lines Zoom:

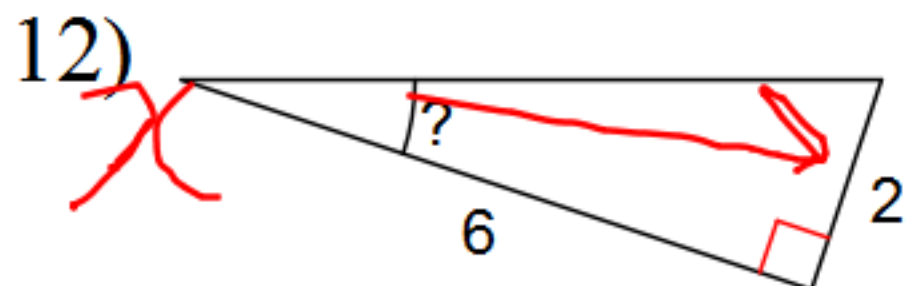
[More like these](#)

Jump



1-up

Find the measure of the indicated angle to the nearest degree.



$$\tan x = \frac{O}{A}$$

$$\tan x = \frac{2}{6}$$

$$\tan x = 0.3333$$

$$x = 18.4^\circ$$

$$x = 19^\circ$$

☒ Question numbers ☐ Show answers
☒ Directions ☒ Changing questions hides answers
☒ Lines Zoom:

[More like these](#)

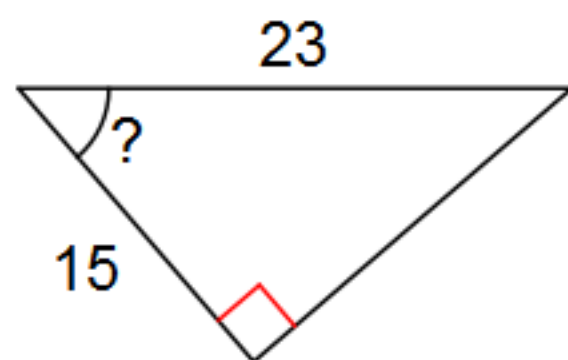
Jump



1-up

Find the measure of the indicated angle to the nearest degree.

13)

 x 

$$\cos x = \frac{15}{23}$$

$$\cos x = 0.65217$$

$$x = 49.29$$

$$x = 49.3^\circ$$

☒ Question numbers ☐ Show answers
☒ Directions ☒ Changing questions hides answers
☒ Lines Zoom:

[More like these](#)

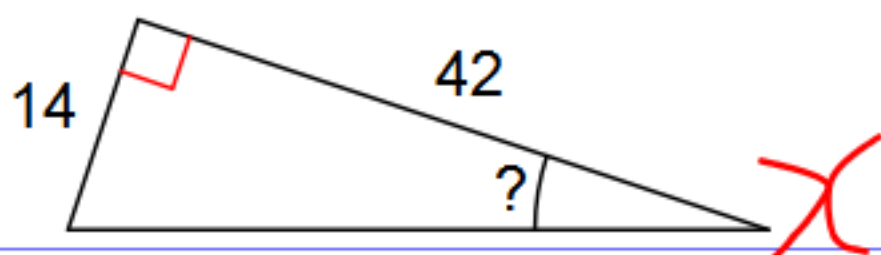
Jump



1-up

Find the measure of the indicated angle to the nearest degree.

14)



$$\tan x = \frac{14}{42}$$

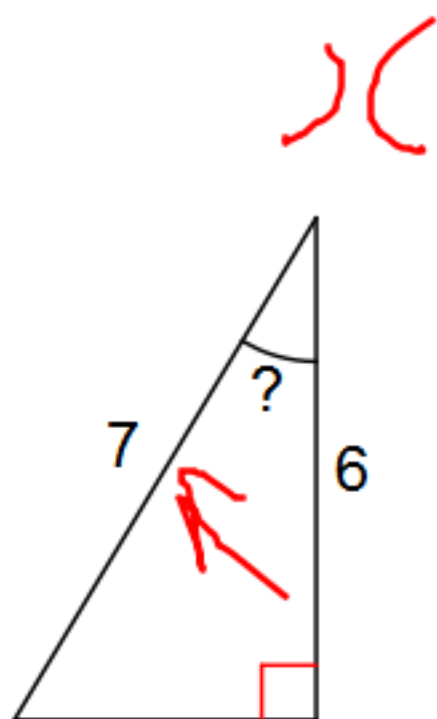
$$\tan x = 0.3333$$

$$\tan x = 18.4^\circ$$

$$\tan x = 18^\circ$$

Find the measure of the indicated angle to the nearest degree.

15)



SOHCAHTOA

$$\cos x = \frac{\text{adj}}{\text{hyp}}$$

$$\cos x = \frac{6}{7}$$

$$\cos x = 0.8571$$

$$\cos^{-1}$$

☒ Question numbers ☐ Show answers
☒ Directions ☒ Changing questions hides answers
☒ Lines Zoom:

[More like these](#)

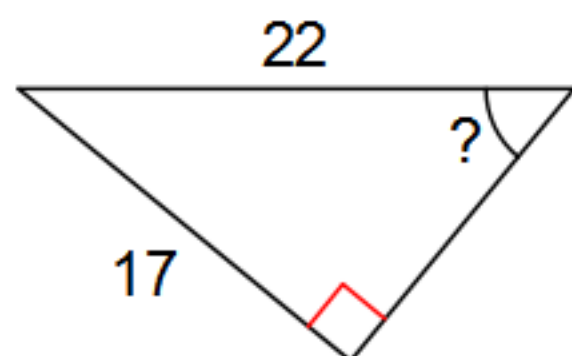
Jump



1-up

Find the measure of the indicated angle to the nearest degree.

16)



$$\sin x = \frac{O}{H}$$
$$\sin x = \frac{17}{22}$$

$$\sin x = 0.7727$$
$$x = 50.5^\circ$$
$$x = 51^\circ$$