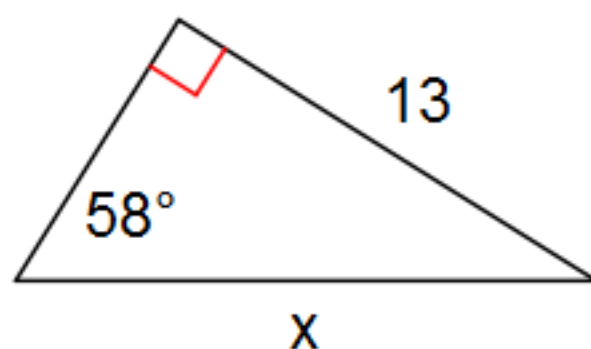


Find the missing side. Round to the nearest tenth.

6)



$$\sin 58^\circ = \frac{0}{1}$$

$$\sin 58^\circ = \frac{13}{x}$$

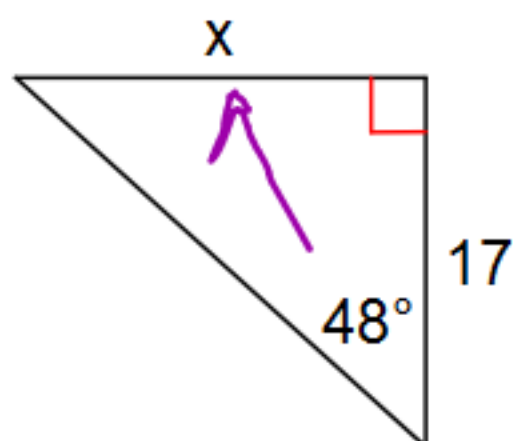
$$x \sin 58^\circ = 13$$

$$\frac{x \sin 58^\circ}{\sin 58^\circ} = \frac{13}{\sin 58^\circ}$$

$$x = 15.3$$

Find the missing side. Round to the nearest tenth.

7)



$$\tan 48^\circ = \frac{O}{A}$$

$$\tan 48^\circ = \frac{x}{17}$$

$$x = 17 \tan 48^\circ$$

$$x = 18.9$$

☒ Question numbers ☐ Show answers
☒ Directions ☒ Changing questions hides answers
☒ Lines Zoom:

[More like these](#)

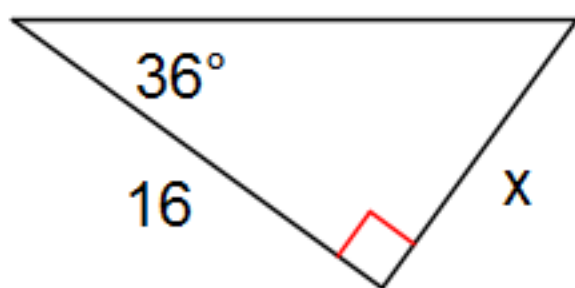
Jump



1-up

Find the missing side. Round to the nearest tenth.

8)



$$\tan 36^\circ = \frac{16}{x}$$

~~$$\tan 36^\circ = \frac{16}{x}$$~~

$$16 \tan 36 = x$$

$$11.6 = x$$

☒ Question numbers ☐ Show answers
☒ Directions ☒ Changing questions hides answers
☒ Lines Zoom:

[More like these](#)

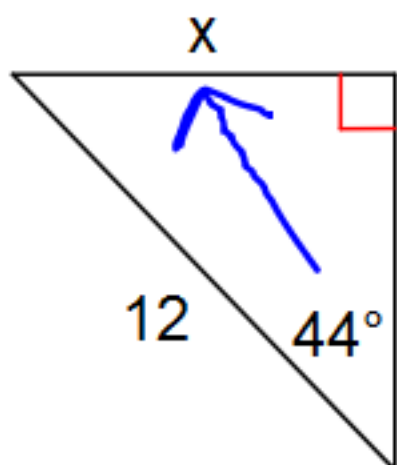
Jump



1-up

Find the missing side. Round to the nearest tenth.

9)



$$\sin 44^\circ = \frac{x}{12}$$

~~$$\sin 44^\circ = \frac{x}{12}$$~~

$$x = 12 \sin 44$$

$$x = 8.3$$

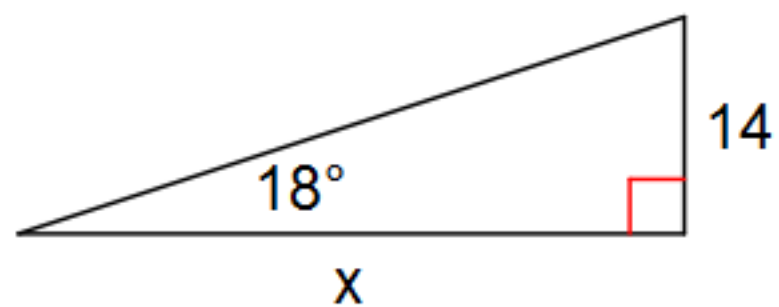
☒ Question numbers ☐ Show answers
☒ Directions ☒ Changing questions hides answers
☒ Lines Zoom:

[More like these](#)[Jump](#)

1-up

Find the missing side. Round to the nearest tenth.

10)



Finish for homework