

Filter Index Order

Absolute value
Equations, graphing
Equations, solving
Inequalities
Bar graphs
Reading
Box-and-whisker plots
Drawing
Combining like terms
Completing the square
By finding the constant
Solving equations by
Correlation
Custom question
Discriminant

2.89 pages

18 questions

Current question sets (2):

9 × Using Trig to Find Missing Sides of Triangle
9 × Using Trig to Find Missing Sides of Triangle

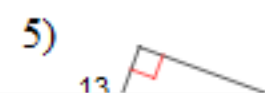
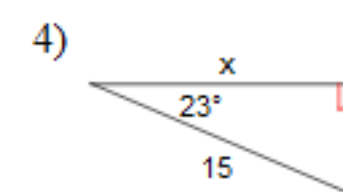
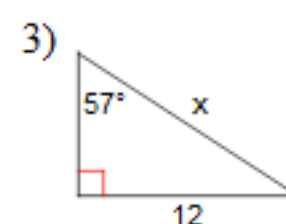
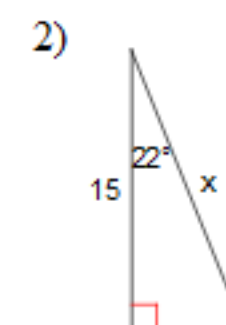
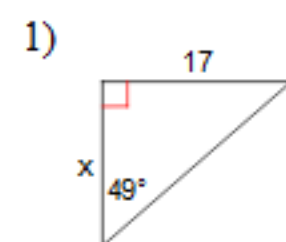
Math 10P

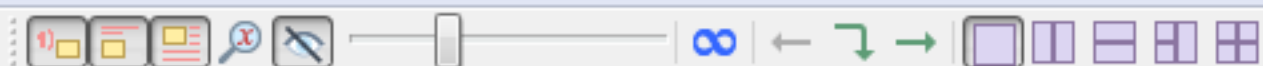
Name _____

Trigonometry Assignment #3 Finding Missing Side

Date _____

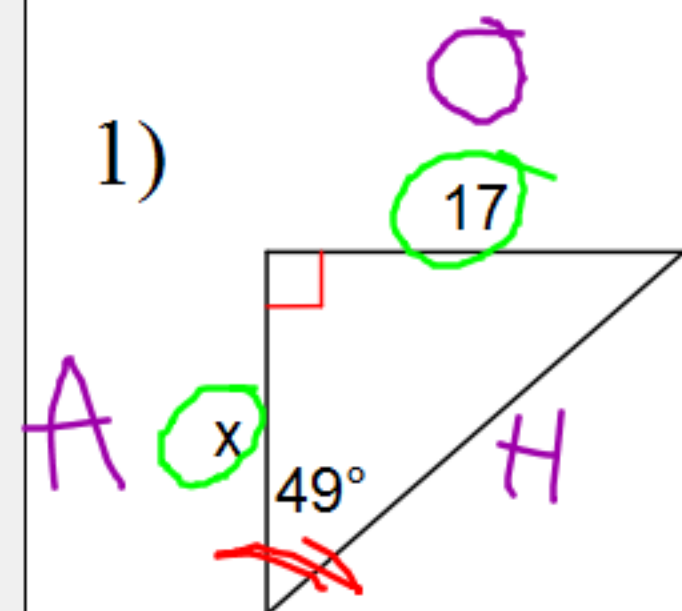
Find the missing side. Round to the nearest tenth.





Find the missing side. Round to the nearest tenth.

1)



$$\tan \theta = \frac{O}{A}$$

$$\tan 49 = \frac{17}{x}$$

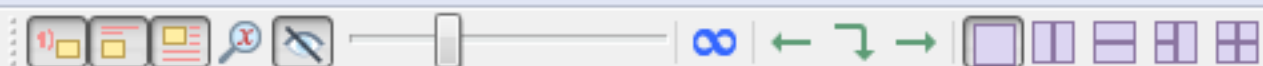
$$\frac{17}{\tan 49} = \frac{(\cancel{\tan 49})(x)}{\cancel{\tan 49}}$$

$$\frac{17}{1.1504} = x$$

$$14.777 = x$$

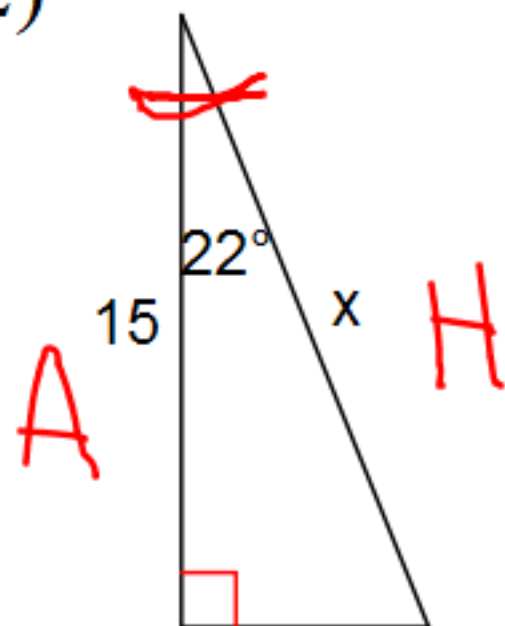
$$14.8 = x$$





Find the missing side. Round to the nearest tenth.

2)

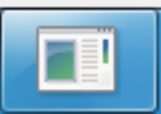


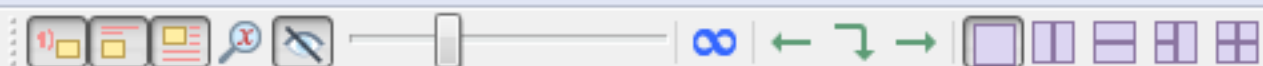
$$\cos \theta = \frac{A}{H}$$

$$\cos 22 = \frac{15}{x}$$

$$15 = (\cos 22)(x)$$

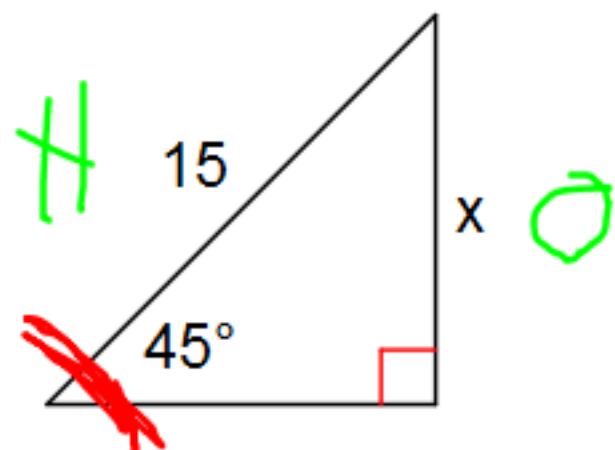
$$16.2 = x$$





Find the missing side. Round to the nearest tenth.

13)



$$\sin \theta = \frac{O}{H}$$

$$\sin 45 = \frac{x}{15}$$

$$x = 10.6$$



3) 14.3

4) 13.8

5) 38.0

6) 15.3

7) 18.9

8) 11.6

9) 8.3

10) 43.1

11) 19.4

12) 14.6

14) 9.4

15) 20.8

16) 23.3

17) 19.0

18) 14.3