

Advanced Functions

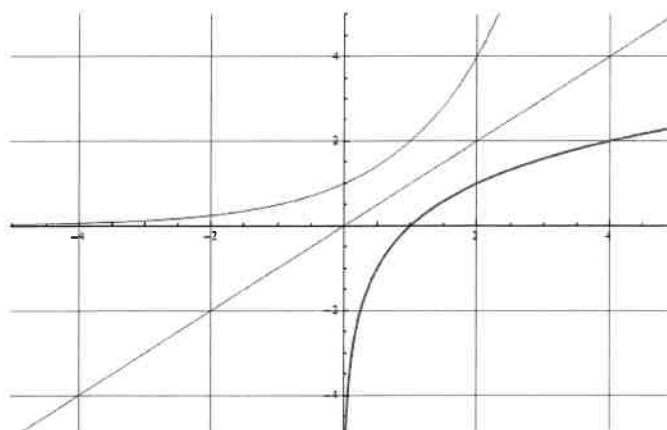
Teacher Notes

Course Notes

Unit 7 – Exponential and Logarithmic Functions

We will learn

- *how Exponential and Logarithmic Functions are related*
- *how to describe the characteristics of Logarithmic Functions and their graphs*
- *techniques for simplifying and evaluating logarithmic expressions and equations*
- *how to solve exponential and logarithmic equations*
- *how to apply concepts and techniques to solve real world problems involving exponential and logarithmic functions*



Chapter 7 – Exponential and Logarithmic Functions

Contents with suggested problems from the Nelson Textbook (Chapter 8)

You are welcome to ask for help, from myself or your peers, with any of the following problems. They will be handed in on the day of the Unit Test as a homework check.

7.1 Exploring the Logarithmic Function

Pg. 451 #1c, 4, Finish 5 – 7, 9, 11

7.2 Evaluating Logarithms (Part 1)

Pg. 466 #3

7.3 Evaluating Logarithms (Part 2)

Pg. 466 – 468 #4 – 7, 9, 10, 11, 14 – 17, 19

7.4 The Laws of Logarithms

Pg. 475 – 476 #2, 4 – 8, 10, 11

7.5 Solving Exponential Equations

Pg. 485 – 486 #2, 3cdf, 4, 5, 6acd, 8adf (see Ex 2, Pg. 483), 10

7.6 Solving Logarithmic Equations

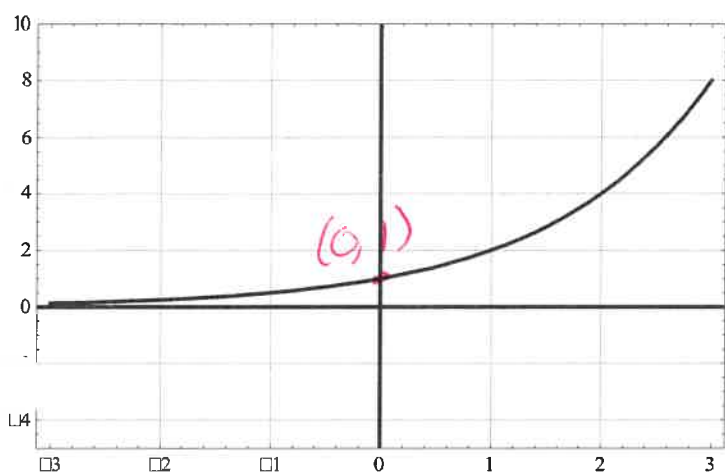
Pg. 491 – 492 #1bef, 2bcf, 4ade, 5, 7, 9, 10, 11d, 12, 14

7.1 Exploring the Logarithmic Function

Learning Goal: We are learning that a logarithm is the inverse of the exponential function.

In grade 11 Functions, you spent a bunch of time considering Exponential Functions, and it seems like a good idea to spend a little time reviewing that type of function.

Consider the sketches of the graphs of the functions $f(x) = 2^x$ and $g(x) = \left(\frac{1}{2}\right)^x$:



Features of $f(x) = 2^x$:

Exponential Growth

Domain:

$(-\infty, \infty)$

Range:

$(0, \infty)$

Axis Intercepts:

x-int: none

y-int: $(0, 1)$

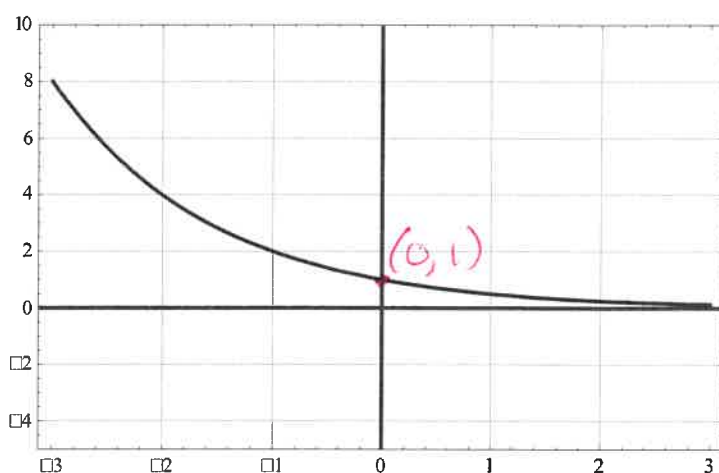
Asymptotes:

V.A. None

H.A. $y = 0$

Intervals of inc/decrease:

increase $(-\infty, \infty)$ *never decreases*



Features of $g(x) = \left(\frac{1}{2}\right)^x$:

Exponential Decay

Domain:

$(-\infty, \infty)$

Range:

$(0, \infty)$

Axis Intercepts:

x-int: none

y-int: $(0, 1)$

Asymptotes:

V.A. None

H.A. $y = 0$

Intervals of inc/decrease:

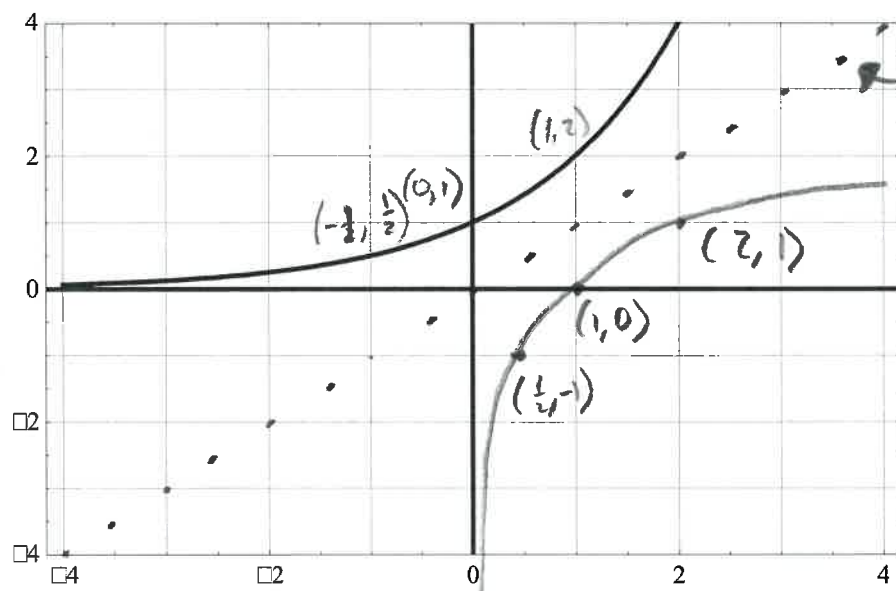
decrease $(-\infty, \infty)$ *never increases*

One important aspect of functions is the concept of inverse. We have in fact spent a good chunk of time talking about the inverses of functions. In case you've forgotten, let's take a look at how to find the inverse of a function.

There are two methods. One is a **geometric approach**, and the other (more useful) method is an **algebraic approach**.

Inverse of a function geometrically

Consider the sketch of the graph of the function $f(x) = 2^x$:



“Mirror” $y=x$

Then Draw inverse

Domain of $f(x)$ is the
Range of $f^{-1}(x)$

Range of $f(x)$ is the
Domain of $f^{-1}(x)$

Why isn't this technique very useful for the mathematician?

Graphs are not always accurate

Inverse of a function algebraically

Recall that the basic technique for finding the algebraic inverse of a function is to switch x and $f(x)$ and then solve for $f^{-1}(x)$.

e.g. Determine the inverse of $f(x) = 2(x-1)^2 + 2$

$$\begin{aligned}
 y &= 2(x-1)^2 + 2 \\
 x &= 2(y-1)^2 + 2 \\
 x-2 &= 2(y-1)^2 \\
 \frac{x-2}{2} &= (y-1)^2 \\
 \pm \sqrt{\frac{x-2}{2}} &= y-1 \\
 \pm \sqrt{\frac{x-2}{2}} + 1 &= y \\
 \therefore f^{-1}(x) &= \pm \sqrt{\frac{x-2}{2}} + 1
 \end{aligned}$$

O.K., now let's try this same technique for an exponential function.

Example 7.1.1

Determine the inverse of $f(x) = 2^x$

(First we switch x and $f(x)$)

$$x = 2^y$$

swap
as

$$x = 2^{f^{-1}(x)}$$

(this is called the exponential form of the inverse)

O.K. now we just need to isolate for $f^{-1}(x)$...

Not a word...

How do we invert the operation of exponentiation?

Definition 7.1.1

Given $y = a^x$

Note: A Logarithm is an

Exponent

$$x = \log_a y$$

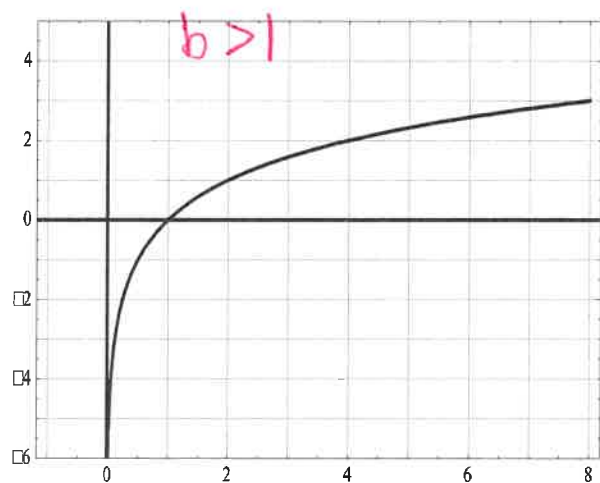
calculates the exponent

We will use the following form for Logarithmic Functions:

so if $x = 2^y$

$$y = \log_2 x$$

Basic Sketches of the General Logarithmic Function



$$f(x) = \log_2 x$$

Domain:

$$(0, \infty)$$

Axis Int's:

x-int: (1, 0)

y-int: none

Intervals of inc/dec

Always increases

$$(-\infty, \infty)$$

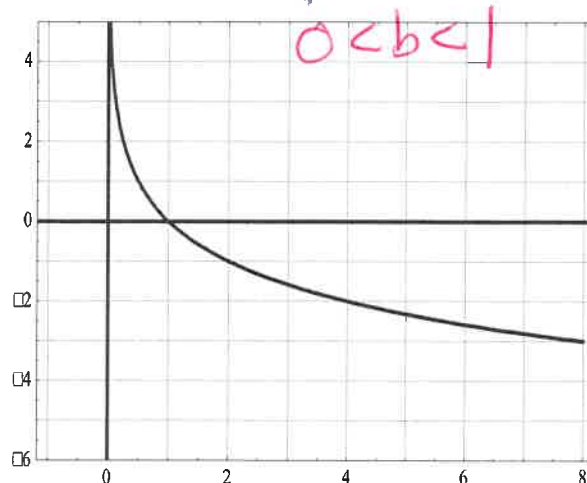
Range:

$$(-\infty, \infty)$$

Asymptotes:

V.A. $x = 0$

H.A. none



$$g(x) = \log_{\frac{1}{2}} x$$

Domain:

$$(0, \infty)$$

Axis Int's:

x-int: (1, 0)

y-int: None

Intervals of inc/dec

Always decreases

$$(0, \infty)$$

Range:

$$(-\infty, \infty)$$

Asymptotes

V.A. $x = 0$

H.A. none

Example 7.1.2

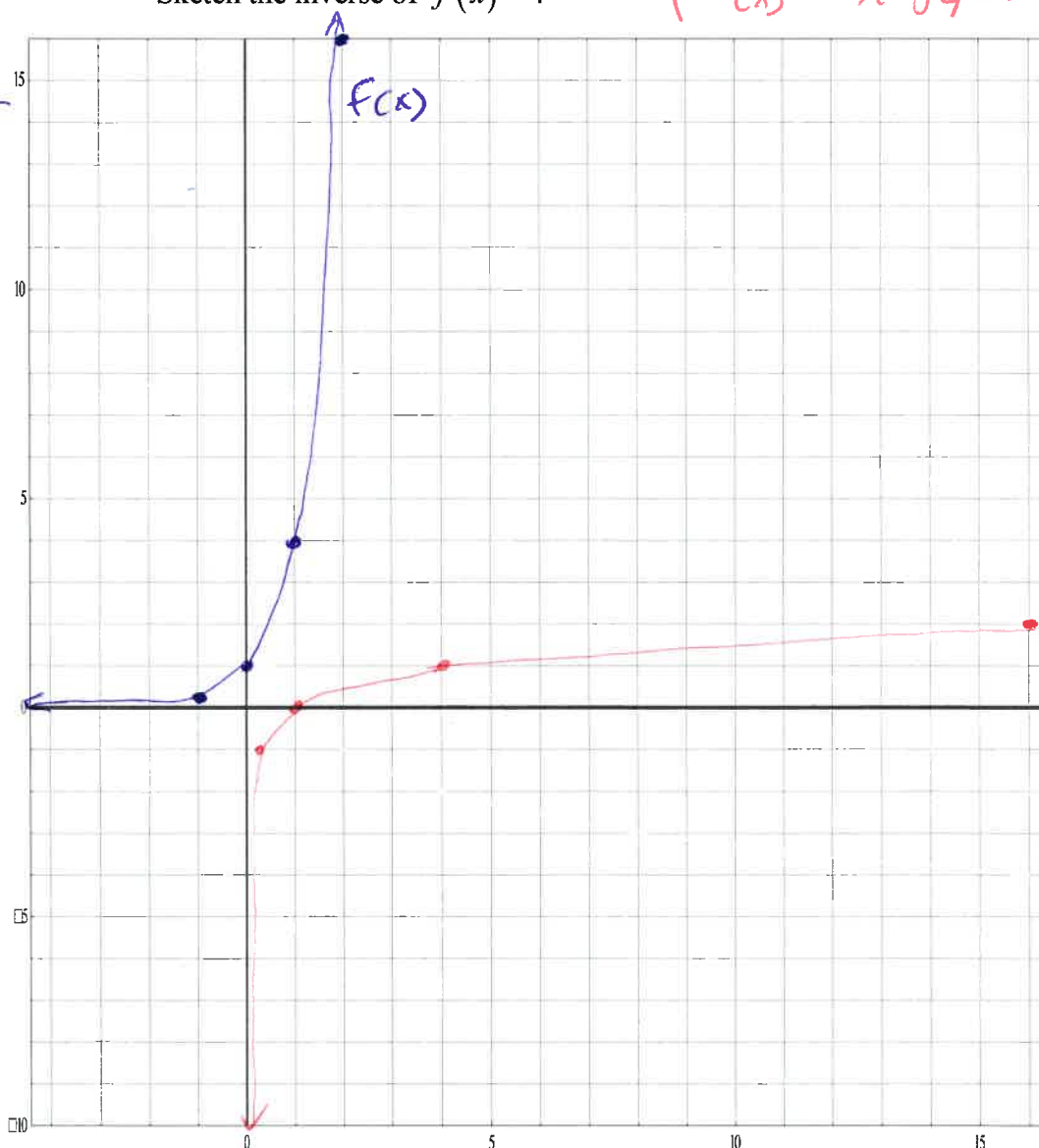
From your text: Pg. 451 #1a)

Sketch the inverse of $f(x) = 4^x$

$$f^{-1}(x) = \log_4(x)$$

 $f(x)$

x	4^x
-1	$\frac{1}{4}$
0	1
1	4
2	16



x	$\log_4 x$
$\frac{1}{4}$	-1
1	0
4	1
16	2

Example 7.1.3

From your text: Pg. 451 #2

Write the equation of the above inverse function in i) exponential and ii) logarithmic form:

$$f(x) = 4^x \quad \text{i) } x = 4^{f^{-1}(x)}$$

$$\text{ii) } f^{-1}(x) = \log_4(x)$$

Example 7.1.4

From your text: Pg. 451

- a) #5, 6cd Write the inverse of the given exponential function in i) exponential and ii) logarithmic form:

1) $y = \left(\frac{1}{4}\right)^x$
 i) $x = \left(\frac{1}{4}\right)^{y^{-1}}$
 ii) $y^{-1} = \log_{\frac{1}{4}} x$

2) $y = m^x$
 i) $x = m^{y^{-1}}$
 ii) $y^{-1} = \log_m(x)$

- b) #7c) Write the equation of the given logarithmic function in exponential form:

$y = \log_3(x)$
 exponent Base Answer $\therefore x = 3^y$

- c) #8c) is a question which can be very confusing if you don't carefully consider the context of the problem.

Write the equation of the **INVERSE FUNCTION** of given logarithmic function (in exponential form...well duh).

$f(x) = \log_3(x)$
 exponent base answer

So, $3^{f(x)} = x$
 Inverse: $f^{-1}(x) = 3^x$

- d) #9adf) Evaluate (remember that **evaluate** means to calculate a number)

1) $\log_2 4 = x$ 2) $\log_5 1 = x$ 3) $\log_3 \sqrt{3} = x$ remember $\sqrt{x} = x^{1/2}$
 $2^x = 4$ $5^x = 1$ $3^x = \sqrt{3}$
 $\therefore x = 2$ $\therefore x = 0$ $\therefore x = \frac{1}{2}$

- e) #11 For $y = \log_2 x$ determine the coordinates of the points on the graph with

functional (y) values of -2, -1, 0, 1, 2

$\log_2 x = -2$ $\log_2 x = -1$ $\log_2 x = 0$ $\log_2 x = 1$ $\log_2 x = 2$
 $2^{-2} = x = \frac{1}{4}$ $2^{-1} = x = \frac{1}{2}$ $2^0 = x = 1$ $2^1 = x = 2$ $2^2 = x = 4$

Success Criteria:

- I can understand that the general shape of the graph of a logarithmic function depends on the value of the base
- I can understand that the logarithmic function is the inverse of the exponential function, and thus all of their properties are reversed

7.2 Evaluating Logarithms (Part 1)

Learning Goal: We are learning to evaluate logarithmic expressions, and to approximate the logarithm of a number to any base.

We will learn to “evaluate” through many examples, keeping in mind the fact that logarithms and exponentials are inverses of each other.

Example 7.2.1

Evaluate

a) $\log_2(32) = x$

base answer

Exponent

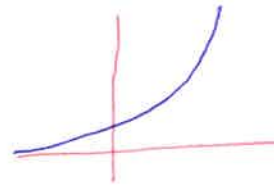
So, $2^x = 32$

$$2^x = 2^5$$

$$\therefore x = 5$$

b) $\log_3(-9) = x$

$$3^x = -9$$



Range is $(0, \infty)$

\therefore No solutions!

Also, $f(x) = \log(x)$ has a domain of $(0, \infty)$

c) $\log_4\left(\frac{1}{64}\right) = x$

$$4^x = \frac{1}{64}$$

$$4^x = \frac{1}{4^3}$$

$$4^x = 4^{-3}$$

$$\therefore x = -3$$

d) $\log_{254}(1)$

$$254^x = 1$$

$$x = 0$$

e) $\log_4(32)$

$$4^x = 32$$

Find a common base for both
4 + 32

multiply $(2^2)^x = 2^5$

once you have a common base,
you can solve the exponents

$$2x = 5$$

$$x = \frac{5}{2}$$

f) $\log_3\left(\frac{1}{81}\right)$

$$= 3^x = \frac{1}{81}$$

$$3^x = \frac{1}{3^4}$$

$$3^x = 3^{-4}$$

$$x = -4$$

g) $\log_5(\sqrt[4]{125})$

$$= 5^x = (125)^{1/4}$$

$$5^x = (5^3)^{1/4}$$

$$\therefore x = 3 \cdot \frac{1}{4}$$

$$x = \frac{3}{4}$$

h) $\log_9(\sqrt{27})$

$$9^x = 27^{1/2}$$

$$(3^2)^x = (3^3)^{1/2}$$

$$\therefore 2x = \frac{3}{2}$$

$$x = \frac{3}{4}$$

7.3 Evaluating Logarithms (Part 2)

Here we take this idea of evaluation up a notch. We will continue learning "by example".

Example 7.3.1

Evaluate

a) $\log_3(\sqrt[5]{27})$

$$3^x = (27)^{1/5}$$

$$3^x = (3^3)^{1/5}$$

$$3^x = 3^{3/5}$$

$$\therefore x = \frac{3}{5}$$

b) $\log_5(32)$

$$5^x = 32$$

No common base, use
graphing tech.

Graph $y = 5^x$

$$y = 32$$

$$x = 2.153$$

c) $\log_3(19)$

$$3^x = 19$$

Graph $y = 3^x$

$$y = 19$$

$$x = 2.68$$

d) $\log(1000)$

when no number is given,
you are dealing with base 10

"The Common Log"

$$10^x = 1000$$

$$10^x = 10^3$$

$$x = 3$$

e) $\log(10^6)$

$$10^x = 10^6$$

$$\boxed{x = 6}$$

f) $\log_3(3^5)$

$$3^x = 3^5$$

$$\boxed{x = 5}$$

g) $\log(27)$

Use the log button on calculator

$$= 1.431$$

↳ only does base 10 by default

Example 7.3.2

From your text: Pg. 467 #12

Half-life is the time it takes for half of a sample of a radioactive element to decay. The function $M(t) = P\left(\frac{1}{2}\right)^{\frac{t}{h}}$ can be used to calculate the mass remaining if the half-life is h and the initial mass is P . The half-life of radium is 1620 years.

t = time in years
 h = half life in years

- If a laboratory has 5 g of radium, how much will there be in 150 years?
- How many years will it take until the laboratory has only 4 g of radium?

a) $\therefore M(t) = 5 \left(\frac{1}{2}\right)^{\frac{t}{1620}}$

$$M_{(150)} = 5 \left(\frac{1}{2}\right)^{\frac{150}{1620}}$$

$$M_{(150)} = 4.69 \text{ grams}$$

b) $4 = 5 \left(\frac{1}{2}\right)^{\frac{t}{1620}}$

$$0.8 = \left(\frac{1}{2}\right)^{\frac{t}{1620}} \quad \left. \vphantom{\frac{t}{1620}} \right\} \begin{array}{l} \text{no need to} \\ \text{rearrange} \end{array}$$

Graph answers

$$y = 4 \quad y = 5 \left(\frac{1}{2}\right)^{\frac{t}{1620}}$$

$$t = 521.5 \text{ years}$$

Example 7.3.4

From your text: Pg. 467 #13

The function $s(d) = 0.159 + 0.118 \log d$ relates the slope, s , of a beach to the average diameter, d , in millimetres, of the sand particles on the beach. Which beach has a steeper slope: beach A, which has very fine sand with $d = 0.0625$, or beach B, which has very coarse sand with $d = 1$? Justify your decision.

$$\begin{aligned} \text{Beach A: } S(0.0625) &= 0.159 + 0.118 \log(0.0625) \\ &\quad * \text{we can do base 10 logs on calculator} \\ &= 0.0169 \end{aligned}$$

$$\begin{aligned} \text{Beach B: } S(1) &= 0.0159 + 0.118 \underbrace{\log(1)}_{=0} \\ &= 0.0159 \end{aligned}$$

\therefore Beach B ^{has} ~~is~~ steeper slope

Success Criteria:

- I can understand that logarithms of negative numbers do not exist, because a negative number cannot be written as a power of a positive base.
- I can estimate the value of a logarithm using my calculator
- I can recognize the common logarithm: $\log x = \log_{10} x$

7.4 The Laws of Logarithms

Learning Goal: We are learning to use the laws of logarithms to simplify expressions.

In terms of human understanding, new knowledge can be built from previous knowledge. If this weren't the case, then humans would either have no knowledge at all, or we would prepossess all knowledge without any learning. Now, I know that I personally don't have all knowledge. I'm fairly certain that you do not have all knowledge either. At the same time, I know that I know more today than I did in the past. That is to say, I know that my knowledge has increased. I can only hope that yours has too, at least in terms of mathematics. If it hasn't, then there is only one thing that can be done. Work. Amen and amen.

At this point in our mathematical discussions, we have the knowledge that:

- There are exponent laws
- Logarithms are the inverse of exponentials

We expect, then, that there will be some **Laws of Logarithms** which will allow us to manipulate logarithms algebraically. To find (build?) these elusive Log Laws, we will begin by assuming the following to be true:

- 1) The Exponent Rules
- 2) Logarithms are the inverses of exponentials
- 3) If $M = N$, then $\log_a(M) = \log_a(N)$

$$a^m \cdot a^n = a^{m+n}$$

$$\frac{a^m}{a^n} = a^{m-n}$$

The Logarithm Laws

1. Evaluate $\log_a(a)$

Let $x = \log_a(a)$

↑ exponent ↑ base ↑ answer

$$a^x = a^1 \quad \boxed{\therefore x=1}$$

Rule
log undoes
itself

$$\boxed{\log_a a = 1}$$

$$(a^m)^n = a^{mn}$$

$$a^0 = 1$$

$$a^{-1} = \frac{1}{a}$$

2. Evaluate $\log_a(a^b)$

Let $x = \log_a(a^b)$

↑ undoes itself

$$a^x = a^b \quad \boxed{\therefore x=b}$$

Rule II

$$\log_a(a^b) = b \log_a a$$

These are just like the Power laws!

3. The Product Law of Logarithms

Prove $\log_a(m \cdot n) = \log_a(m) + \log_a(n)$ $a, m, n > 0$

Consider $\log_a(m \cdot n)$ and let $m = a^x$ and $n = a^y$
 $\log_a(m) = x$ $\log_a(n) = y$

$$= \log_a(a^x \cdot a^y)$$

$$= \log_a(a^{x+y})$$

By rule 2...

$$= x + y$$

$$= \log_a(m) + \log_a(n)$$

Note: Logarithm Laws go backwards too!!!

4. The Quotient Law of Logarithms

Prove $\log_a\left(\frac{m}{n}\right) = \log_a(m) - \log_a(n)$ $a, m, n > 0$

Let $m = a^x$ and $n = a^y$

$$\log_a(m) = x$$

$$\log_a(n) = y$$

$$\therefore \log_a\left(\frac{a^x}{a^y}\right)$$

$$= \log_a(a^{x-y})$$

Rule 2...

$$= x - y$$

$$= \log_a(m) - \log_a(n)$$

5. The Power Law of Logarithms

Prove $\log_a(m^n) = n \cdot \log_a(m)$ $a, m > 0$

Consider $\log_a(m^n)$

$$= \log_a(\underbrace{m \cdot m \cdot m \cdot m \cdot m \cdots}_{n \text{ of these}})$$

$$= \underbrace{\log_a(m) + \log_a(m) + \log_a(m) + \cdots}_{n \text{ of these}}$$

Product
Law #3

$$= n \cdot \log_a(m)$$

Change of Base

Changing base allows one to use a calculator to evaluate numbers like $\log_3 7$ without graphing, or using "guess and check" (unless you happen to possess a cheater calculator like Patrick Clark). Our goal will be to change the "base 3 log" to a "base 10 log".

Procedure

- 1) Invert the non-base 10 log to an exponential equation.
- 2) Take the log (\log_{10}) of "both sides"
- 3) Solve using your calculator.

e.g. Evaluate $\log_3 7 = x$

$$\therefore 3^x = 7$$

take the \log_{10} of both sides

$$\log(3^x) = \log(7)$$

$$\frac{x \log 3}{\log 3} = \frac{\log 7}{\log 3}$$

$$\Rightarrow x = \frac{\log_{10} 7}{\log_{10} 3}$$

$$x = 1.77 \text{ ish}$$

This idea leads to another Log Law: **The Change of Base Law**

Rule:

$$\text{If } x = \log_a(b), \text{ then } x = \frac{\log(b)}{\log(a)}$$

Example 7.4.1

From your text: Pg. 475 #6a)

Evaluate $\log_{25}(5^3)$

$\begin{matrix} \text{b} \\ \text{a} \end{matrix}$

change the base:

$$x = \frac{\log(5^3)}{\log(25)}$$

$$x = 1.5$$

or, old way

$$\begin{aligned} &= 3 \log_{25}(5) \\ &= 3 \log_{25}(25^{1/2}) \\ &\quad \text{undoes itself} \\ &= \frac{1}{2} \cdot 3 \\ &= \frac{3}{2} \end{aligned}$$

$$\sqrt{25} = 5$$

Example 7.4.2

Evaluate $\log_3(54) - \frac{1}{2} \log_3(36)$

$$= \log_3(54) - \log_3(36^{1/2})$$

$$= \log_3(54) - \log_3(6)$$

$$= \log_3\left(\frac{54}{6}\right)$$

$$= \log_3(9) = 2$$

$$\text{Now, } 3^x = 9$$

$$\therefore x = 2$$

Let's try to combine into a single log.
Same bases!

Example 7.4.3Evaluate $\log_8(2) + 3\log_8(2) + \frac{1}{2}\log_8(16)$

$$= \log_8(2) + \log_8(2^3) + \log_8(16^{1/2})$$

$$= \log_8(2) + \log_8(8) + \log_8(4)$$

Don't simplify here. combine the logs

$$= \log_8(2 \cdot 8 \cdot 4)$$

$$= \log_8(64)$$

$$= 2$$

$$8^2 = 64$$

or, simplify first

$$= \log_8(2 \cdot 4) + 1$$

$$= \log_8(8) + 1$$

$$= 1 + 1$$

$$= 2$$

Example 7.4.4

Express as a single logarithm:

a) $\log(3) + \log(9)$

$$= \log(27)$$

b) $\log_5(6) + \log_5(4) - \log_5(7)$

clever!

$$= 1 \therefore = \log_5(5)$$

$$= \log_5\left(\frac{6 \cdot 4}{7}\right)$$

$$= \log_5\left(\frac{24}{7}\right)$$

Example 7.4.5

Simplify and evaluate:

a) $\log_4(432) - \log_4(27)$

$$= \log_4\left(\frac{432}{27}\right)$$

$$= \log_4(16)$$

$$\rightarrow 4^x = 16$$

$$\boxed{= 2}$$

b) $\log(\sqrt[7]{1000})$

$$= \log(1000^{1/7})$$

$$= \frac{1}{7} \cdot \log(1000)$$

$$= \frac{1}{7} \cdot 3$$

$$= \frac{3}{7}$$

$$10^x = 1000$$

Example 7.4.6Express IN **TERMS** OF $\log_b(x)$, $\log_b(y)$, and $\log_b(z)$

$$\log_b\left(\frac{z^3 y^2}{x^5}\right)$$

separate!

$$= \log_b(z^3) + \log_b(y^2) - \log_b(x^5)$$

$$= 3 \log_b(z) + 2 \log_b(y) - 5 \log_b(x)$$

Example 7.4.7

Solve the equation:

$$\log_3(x) + \log_3(10) = 5\log_3(2) + \log_3(5)$$

Isolate variable

$$\log_3(x) = 5\log_3(2) + \log_3(5) - \log_3(10)$$

$$\log_3(x) = \log_3(2^5) + \dots$$

$$\log_3(x) = \log_3\left(\frac{32 \cdot 5}{10}\right)$$

$$\log_3(x) = \log_3(16)$$

$$\therefore x = 16$$

like exponent, when you have
a same base log, you can just
work in the answers.

Success Criteria:

- I can use the laws of exponents to simplify expressions
- I can use the laws of logarithms to simplify expressions
 - Product Law: $\log_a xy = \log_a x + \log_a y$
 - Quotient Law: $\log_a \left(\frac{x}{y}\right) = \log_a x - \log_a y$
 - Power Law: $\log_a x^n = n \log_a x$

7.5 Solving Exponential Equations

Learning Goal: We are learning to solve exponential equations in one variable using a variety of strategies.

Recall that solving an equation means (in usual terms) “getting x by itself”. That’s generally pretty easy to do, for a student in grade 12.

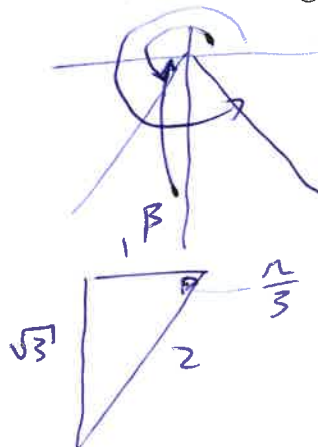
e.g. Solve for x : $2x^3 - 8x = 0$

$$\begin{array}{l} 2x = 0 \\ x = 0 \end{array} \quad \begin{array}{l} 2x(x^2 - 4) = 0 \\ x^2 - 4 = 0 \\ x^2 = 4 \end{array} \quad x = \pm 2$$

Easy as pi! However, “getting x by itself” isn’t always a matter of standard algebra.

e.g. Solve for x : $\sin(x) = -\frac{\sqrt{3}}{2}$

$$\begin{array}{l} \therefore x = \frac{4\pi}{3} \\ \text{and} \\ x = \frac{5\pi}{3} \end{array}$$



We now turn our attention to Solving Exponential Equations (“algebraically”).

Example 7.5.1

Solve $5^{x-2} = 1.7$

take the log of both sides.
This is the inverse operation

$$\begin{aligned} \log(5^{x-2}) &= \log(1.7) \\ x-2 \cdot \log(5) &= \log(1.7) \\ x-2 &= \frac{\log(1.7)}{\log(5)} + 2 \end{aligned}$$

$$x = 2.33$$

No matter what type of equation, “getting x by itself” requires using “inverse operations”. So, for Exponential Equations, it’s Logarithms to the rescue!

Example 7.5.2

From your text: Pg. 485 #3a

Solve $x = \log_3(243)$

Recognize: $3^x = 243$

$$\therefore \log(3^x) = \log(243)$$

$$x \log(3) = \log(243)$$

$$x = \frac{\log(243)}{\log(3)}$$

Notice that this is the
change of base formula!

$$x = 5$$

Example 7.5.3

Solve $32^{3x-5} = \left(\frac{5}{4^2}\right)^x = 4^{\frac{5x}{2}}$

$$\log(32^{3x-5}) = \log(4^{\frac{5x}{2}})$$

$$(3x-5) \log(32) = \left(\frac{5x}{2}\right) \log(4)$$

$$3x \log(32) - 5 \log(32) = \frac{5x}{2} \log(4)$$

$$3x \log(32) - \frac{5x}{2} \log(4) = 5 \log(32) \quad \text{Factor } x$$

$$x \left(3 \log(32) - \frac{5}{2} \log(4) \right) = 5 \log(32)$$

$$x = \frac{5 \log(32)}{3 \log(32) - \frac{5}{2} \log(4)} = \frac{7.5257}{3.01} = 2.5$$

Example 7.5.4Solve $3^{x-4} = 17^{2x+1}$

$$(x-4) \log(3) = (2x+1) \log(17)$$

$$x \log(3) - 4 \log(3) = 2x \log(17) + \log(17)$$

$$x \log(3) - 2x \log(17) = 4 \log(3) + \log(17)$$

$$x (\log(3) - 2 \log(17)) = 4 \log(3) + \log(17)$$

$$x = \frac{4 \log(3) + \log(17)}{\log(3) - 2 \log(17)}$$

$$x = \frac{3.1389}{-1.9838}$$

$$x = -1.51$$

Example 7.5.5

From your text: Pg. 485 #7

A bacteria culture doubles every 15 minutes.

How long will it take for a culture of 20

bacteria to grow to a population of 163 840

bacteria?

*doubling period**Let t be in minutes.*

$$P(t) = 20(2)^{\frac{t}{15}}$$

$$163,840 = 20(2)^{\frac{t}{15}}$$

Doubling Formula:

$$P(t) = P_0 (2)^{\frac{t}{D}}$$

Half-life Formula:

$$A(t) = A_0 \left(\frac{1}{2} \right)^{\frac{t}{h}}$$

Example 7.5.6

From your text: Pg. 485 #6b

A \$1000 investment is made in a trust fund that pays 12%/a, compounded monthly. How long will it take the investment to grow to \$5000?

Equation skeleton: $A(n) = A_0 (1+i)^{n/m}$

- $A(n)$ = Final amount
- A_0 = Initial Amount
- i = Interest rate as a decimal
- m = # Compounding periods

$$A_{(n)} = 5000, \quad A_0 = 1000, \quad i = \frac{0.12}{12} = 0.01$$

$$A_{(n)} = A_{(0)} (1+i)^n$$

$$\frac{5000}{1000} = \frac{1000 (1.01)^n}{1000}$$

$$S = (1.01)^n$$

$$\log 5 = n \log 1.01$$

$$\log 5 = n$$

log 1.01

$$162 = n$$

(months)

$$n = \frac{162}{12} = 13.5 \text{ years}$$

Success Criteria:

- I can solve an exponential equation by taking the common logarithm of both sides, then using the laws of logarithms to simplify and solve for the unknown
- I can solve an exponential equation by writing both sides with the same base, then setting the exponents equal to each other to solve for the unknown

7.6 Solving Logarithmic Equations

Learning Goal: We are learning to solve logarithmic equations with one variable.

This is so much fun that it's ridiculous, but there is a

CAUTION

Some solutions may have to be discarded as **INADMISSIBLE**

Remember: Given $f(x) = \log_a(x)$, then the domain is $(0, \infty)$
 \uparrow x must be bigger than zero.

And now, for the lesson:

But First...

We will be making use of the following facts:

- 1) $\log_a(x) \Rightarrow a > 0, x > 0$
- 2) If $\log_a(M) = \log_a(N)$, then $M = N$
- 3) $\log_a(m) + \log_a(n) = \log_a(m \cdot n)$
- 4) $\log_a(m) - \log_a(n) = \log_a\left(\frac{m}{n}\right)$
- 5) $\log_a(m^n) = n \cdot \log_a(m)$
- 6) Given $x = \log_a(b)$, then $a^x = b$ (or vice-versa)

base exponent
 = answer $\log_{\text{base}}(\text{answer}) = \text{exponent}$

Example 7.6.1

Solve $\log_2(x) = 2\log_2(5)$
 $= \log_2(x) = \log_2(5^2)$

$$\therefore x = 25$$

Admissible domain

$$x > 0$$

Example 7.6.2

Solve $\log(5x-2) = 3$

$$10^3 = 5x - 2$$

$$1000 = 5x - 2$$

$$1002 = 5x$$

$$200.4 = x$$

Admissible domain

$$5x - 2 > 0$$

$$5x > 2$$

$$x > \frac{2}{5}$$

Example 7.6.3

$\log_x(0.04) = -2$

$$x^{-2} = 0.04$$

$$\frac{1}{x^2} = 0.04$$

$$\frac{1}{0.04} = x^2$$

$$\pm \sqrt{\frac{1}{0.04}} = x$$

$$\pm 5 = x$$

Admissible domainBase must be > 0

$$\text{So, } x > 0$$

$$\text{So } x = 5$$

~~$$x = -5$$~~

Example 7.6.4

Solve $\log_2(x) + \log_2(3) = 3$

$$\log_2(3x) = 3$$

$$2^3 = 3x$$

$$8 = 3x$$

$$x = \frac{8}{3}$$

Admissible domain

$$x > 0$$

Example 7.6.5

Solve $3\log(x) - \log(3) = 2\log(3)$

$$\log\left(\frac{3x^3}{3}\right) = \log(3^2)$$

$$\frac{x^3}{3} = 9$$

$$x^3 = 27$$

$$x = 3$$

Admissible domain

$$x > 0$$

Example 7.6.6

Solve $\log_6(x) + \log_6(x-5) = 2$

$$\log_6(x(x-5)) = 2$$

$$6^2 = x(x-5)$$

$$36 = x^2 - 5x$$

$$0 = x^2 - 5x - 36$$

$$0 = (x+4)(x-9)$$

~~$$x = -4$$~~

$$x = 9$$

Admissible domain

$$x > 0$$

$$x-5 > 0$$

$$x > 5$$

Must be true at
All times

$$\therefore x > 5$$

Example 7.6.7Solve $\log_7(x+1) + \log_7(x-5) = 1$

$$\log_7((x+1)(x-5)) = 1$$

$$7^1 = x^2 - 4x - 5$$

$$0 = x^2 - 4x - 12$$

$$0 = (x-6)(x+2)$$

$$\therefore x = 6$$

~~$$x = -2$$~~

Admissible domain

$$x+1 > 0$$

$$x > -1$$

$$x-5 > 0$$

$$x > 5$$

$$\therefore x > 5$$

Success Criteria:

- I can solve a logarithmic equation by simplifying it using the laws of logarithms
- I WILL REMEMBER to create the admissible domain to check for inadmissible solutions!!!

7.7 Problem Solving with Exponentials and Logarithms – *An Independent Study*

In this lesson you will have two class periods to read some examples and think about some problems and write some solutions. Your solutions will be collected at the end of the second period.

Exponential Functions and Logarithmic Functions both have a number of real-world applications. In this lesson you will consider the following applications:

A) pH in Chemistry

pH is used as a measure of the acidity or alkalinity of a solution. pH is calculated using the formula $\text{pH} = -\log[\text{H}^+]$, where $[\text{H}^+]$ is the concentration of Hydrogen ions in mol/L in the solution in question.

Read Example 1 on Pgs. 494 – 495

B) The Richter Scale and Earthquake Intensity

Why is an earthquake with a measure of 7.6 on the Richter Scale so much more damaging than a quake with a measure of 4.6 on the same scale? It's only a difference of 3, after-all. The following paragraph is from the website "How Stuff Works:"

*The most common standard of measurement for an earthquake is the **Richter scale**, developed in 1935 by Charles F. Richter of the California Institute of Technology. The Richter scale is used to rate the **magnitude** of an earthquake -- the amount of energy it released. This is calculated using information gathered by a **seismograph**. The Richter scale is **logarithmic**, meaning that whole-number jumps indicate a tenfold increase. In this case, the increase is in wave amplitude. That is, the wave amplitude in a level 6 earthquake is 10 times greater than in a level 5 earthquake, and the amplitude increases 100 times between a level 7 earthquake and a level 9 earthquake.*

Read Example 2 on Pg. 496

C) Growth or Decay Rate problems

There are many sort of applications here. Financial applications, population growth and radioactive decay are the sort we see most often in High School. The basic growth/decay formulas are:

$$\text{Growth} - A(t) = A_0(1+r)^t$$

$$\text{Decay} - A(t) = A_0(1-r)^t$$

Where (in both formulas) $A(t)$ is the 'amount of stuff' at time t , A_0 is the initial amount of stuff, and r is the growth/decay rate. Note that the formulas are exponential, and so one may need logarithms to solve if looking for t . Of course, these formulas can be modified to better describe the situation being modelled as growth or decay.

Read Example 3 on Pgs. 496 – 497

D) Decibels and Sound Intensity

You've all probably heard that people listening to music using earbuds are in danger of permanent hearing loss. If you are interested, read the article found at: <http://www.nidcd.nih.gov/health/hearing/pages/noise.aspx>

Long-time exposure to sound over 85 dB can cause hearing loss.

Read Example 4 on Pgs. 497 – 498

You are expected to submit solutions to the following problems at the end of class on Friday.

Pg. 499 – 490 #1, 2, 3, 4, 5bd, 6ac, 8, 10, 13, 14, 15, 17, 18

